

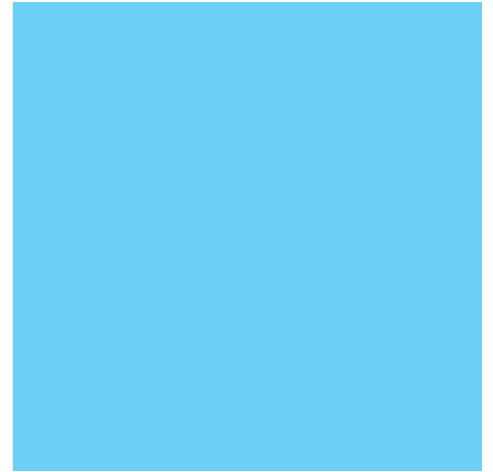
Grass Mower Brush Cutter Boom Lift



Play in the green.



Fujii Snow Rotary



Play in the snow.



The specifications are subject to change without notice.
QR Code® is registered trademarks of DENSO WAVE INCORPORATED in JAPAN and other countries.
Fujii Snow Rotary® is registered trademarks of Fujii Corporation in JAPAN.



Fujii Corporation

■ Address
285 Koike, Tsubame City, Niigata
959-1276 Japan

■ Tel
81-256-64-5512

■ Fax
81-256-64-5763

■ Founded
1865

■ Established
1950

■ Employees
140 as of April 2019

■ Web site
<http://www.e-fujii.co.jp/eng/index.html>



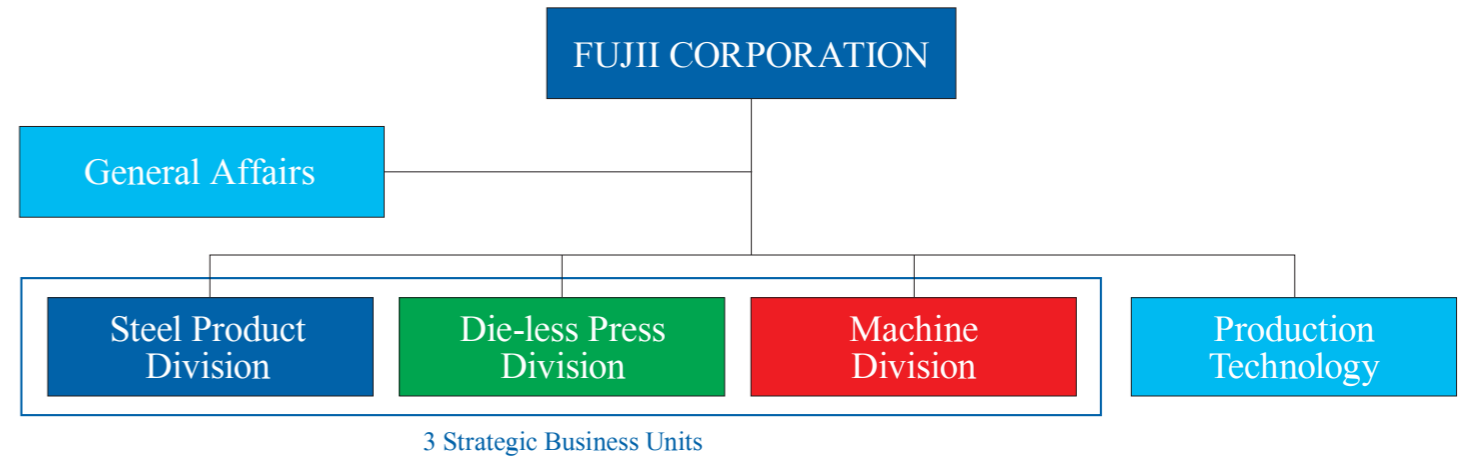
Scan it! Check Fujii web site.

Fujii Snow Rotary is

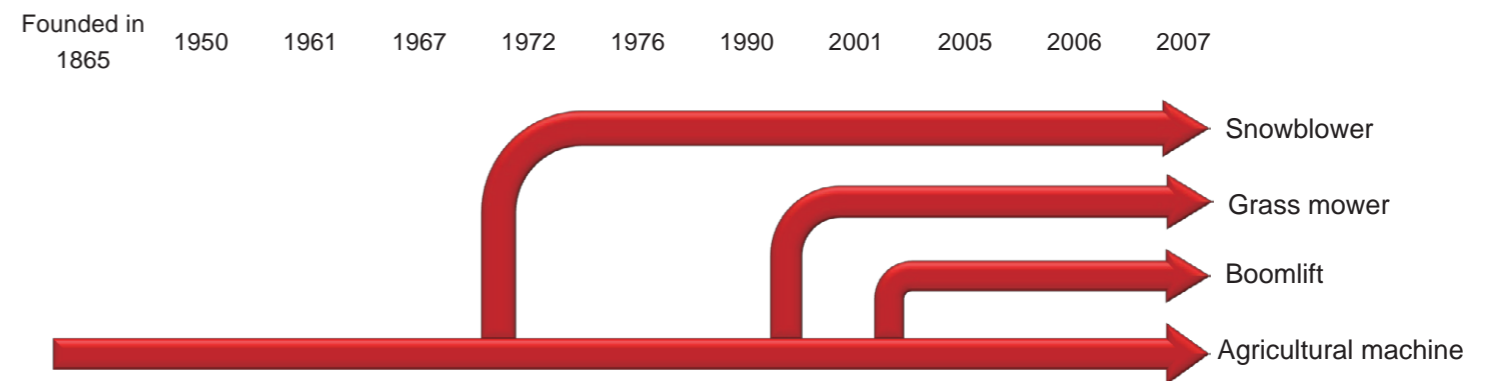
Official Snowblower of Santa Claus.



Business & Organization



Fujii's TIMELINE



Finland: Photo of a snowblower in a snowy setting with a person in a Santa Claus costume.

Switzerland: Photo of a snowblower clearing a snowy path.

France: Photo of a tractor in a vineyard.

Thailand: Photo of a tractor in a rural field.

Japan: Photo of a boomlift working on a tree.

Antarctic: Photo of a snowblower in a snowy landscape.

Germany: Photo of a boomlift working on a tree in a field.

Canada: Photo of a snowblower clearing a snowy area.

Head Office Niigata

Hokkaido Office

Yamaguchi Office

44-14ps

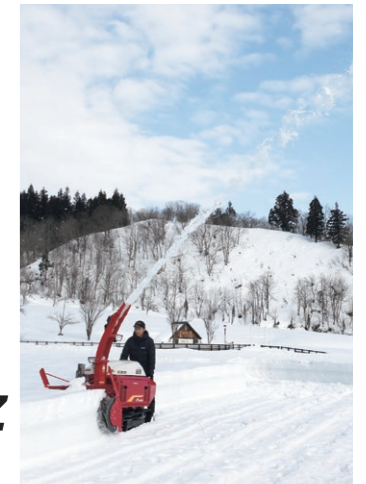
*Scan QR Code, and check details!



SQ1235DK-z



SD1125S2-z



SQ Diesel

SD Gasoline



SD1124DK1-z



SD Diesel



Si1014DK1-z



Si Diesel

Specifications

| MODEL | SQ1235DK-z | SD1124DK1-z | SD1125S2-z | Si1014DK1-z | MODEL |
|---------------------------|--|--|--|---|---------------------------|
| Engine model | Kubota D1803-CR-YMD | Kubota D1105-E4B | Yamaha EH72 | Kubota Z602-E3B | Engine model |
| Engine type | Water cooled, 3-cylinder diesel | Water-cooled, 3-cylinder diesel | Air-cooled, V2 cylinder gasoline | Water-cooled, 2-cylinder diesel | Engine type |
| Maximum output *1 | 25.5 kW / 34.7 PS / 34.2 PS | 17.3 kW / 23.5 PS / 23.2 HP | 18.6kW / 25.0 PS / 24.9HP | 10.1 kW / 13.7 PS / 13.5 HP | Maximum output *1 |
| Start up device | Starter motor | Starter motor | Starter motor | Starter motor | Start up device |
| Displacement | 1826 cc | 1123 cc | 720 cc | 599 cc | Displacement |
| Clearing width | 1200 mm / 47.2 in. | 1100 mm / 43.3 in. | 1100 mm / 43.3 in. | 1000 mm / 39.4 in. | Clearing width |
| Clearing height | 700 mm / 27.6 in. | 680 mm / 26.8 in. | 680 mm / 26.8 in. | 570 mm / 22.4 in. | Clearing height |
| Maximum clearing capacity | 228 t/h | 163 t/h | 140 t/h | 100 t/h | Maximum clearing capacity |
| Maximum throwing distance | 30 m / 32.8 yd. | 25 m / 27.3 yd. | 25 m / 27.3 yd. | 20 m / 21.9 yd. | Maximum throwing distance |
| Lift | Hydraulic | Hydraulic | Hydraulic | Hydraulic | Lift |
| Rolling | Hydraulic | Hydraulic | Hydraulic | Hydraulic | Rolling |
| Chute adjustment | Electric | Electric | Electric | Electric | Chute adjustment |
| L x W x H | 2720 x 1210 x 2010 mm 107.1 x 47.6 x 79.1 in. | 2540 x 1110 x 1960 mm 100.0 x 43.7 x 77.2 in. | 2540 x 1110 x 1960 mm 100.0 x 43.7 x 77.2 in. | 2170 x 1000 x 1685 mm 85.4 x 39.4 x 66.3 in. | L x W x H |
| Total weight | 1185 kg / 2613.0 lbs. | 810 kg / 1786.1 lbs. | 680 kg / 1499.4lbs | 503 kg / 1109.2 lbs. | Total weight |

*1 The maximum output is gross output level in a typical engine substance.
 • The specifications and models may change for improvement without notification.

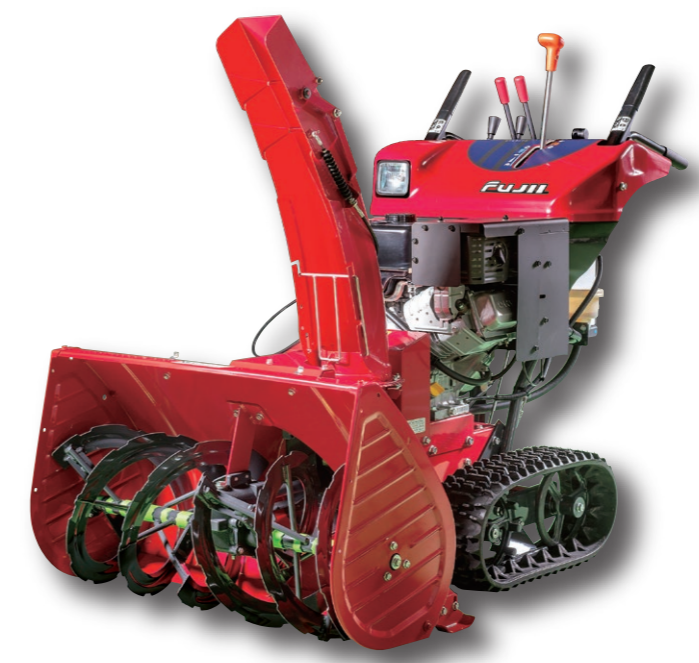
13-6.3ps

*Scan QR Code, and check details!



SH913MRA2-z

SH Gasoline



*The picture is Sk810MX-z.



Sk810MX-z
Sk810M2-z
Sk708M2-z

Sk Gasoline



SA708MX3-z
SA706MX3-z

SA Gasoline



Specifications

| MODEL | SH913MRA2-z | Sk810MX-z | Sk810M2-z | Sk708M2-z | SA708MX3-z | SA706MX3-z | MODEL |
|----------------------------------|--|--|--|--|--|--|----------------------------------|
| Engine model | Mitsubishi GB400LE-801 | Mitsubishi GB300LE-801 | Mitsubishi GB300LE-801 | Mitsubishi GB290LE-801 | Mitsubishi GB290LE-801 | Mitsubishi GB181LN | Engine model |
| Engine type | Air-cooled, 1 cylinder gasoline | Air-cooled, 1 cylinder gasoline | Air-cooled, 1 cylinder gasoline | Air-cooled, 1 cylinder gasoline | Air-cooled, 1 cylinder gasoline | Air-cooled, 1 cylinder gasoline | Engine type |
| Maximum output *1 | 9.6 kW / 13.0 PS / 12.9 HP | 7.4 kW / 10 PS / 9.9 HP | 7.4 kW / 10 PS / 9.9 HP | 5.9 kW / 8.0 PS / 7.9 HP | 5.9 kW / 8.0 PS / 7.9 HP | 4.6 kW / 6.3 PS / 6.2 HP | Maximum output *1 |
| Start up device | Starter motor | Starter motor and Recoil | Starter motor and Recoil | Starter motor and Recoil | Starter motor and Recoil | Recoil | Start up device |
| Displacement | 391 cc | 296 cc | 296 cc | 296 cc | 296 cc | 181 cc | Displacement |
| Clearing width | 900 mm / 35.4 in. | 800 mm / 31.5 in. | 800 mm / 31.5 in. | 710 mm / 28.0 in. | 680 mm / 26.8 in. | 680 mm / 26.8 in. | Clearing width |
| Clearing height | 570 mm / 22.4 in. | 570 mm / 22.4 in. | 570 mm / 22.4 in. | 570 mm / 22.4 in. | 495 mm / 19.5 in. | 495 mm / 19.5 in. | Clearing height |
| Maximum clearing capacity | 80 t/h | 60 t/h | 60 t/h | 50 t/h | 50 t/h | 37 t/h | Maximum clearing capacity |
| Maximum throwing distance | 18 m / 19.7 yd. | 20 m / 21.9 yd. | 20 m / 21.9 yd. | 20 m / 21.9 yd. | 15 m / 16.4 yd. | 15 m / 16.4 yd. | Maximum throwing distance |
| Lift | Electric hydraulic | Electric | Lift lever (Free lock) | Lift lever (Free lock) | Foot | Foot | Lift |
| Rolling | Electric hydraulic | — | — | — | — | — | Rolling |
| Chute adjustment | Electric | Electric | Electric | Electric | Manual | Manual | Chute adjustment |
| L x W x H | 1680 x 900 x 1600 mm 66.1 x 35.4 x 63.0 in. | 1470 x 800 x 1195 mm 57.9 x 31.5 x 47.0 in. | 1470 x 800 x 1195 mm 57.9 x 31.5 x 47.0 in. | 1470 x 710 x 1195 mm 57.9 x 28.0 x 47.0 in. | 1370 x 680 x 1120 mm 53.9 x 26.8 x 44.1 in. | 1370 x 680 x 1120 mm 53.9 x 26.8 x 44.1 in. | L x W x H |
| Total weight | 307 kg / 677.0 lbs. | 184 kg / 405.7 lbs. | 173 kg / 381.5 lbs. | 169 kg / 327.7 lbs. | 131 kg / 288.9 lbs. | 107 kg / 235.9 lbs. | Total weight |

*1 The maximum output is gross output level in a typical engine substance.
• The specifications and models may change for improvement without notification.

Grass Mower

*Scan QR Code, and check details!



MIE

ME1022X1



MG 4WD

MG1022X



MID

MD813M2



MIE

MF1018X



Specifications

| MODEL | ME1022X1 | MF1018X | MG1022X | MD813M2 | MODEL |
|-----------------------|--|--|--|--|-----------------------|
| Engine model | Kawasaki FS651V | Kawasaki FS541V | Kawasaki FS651V | Mitsubishi GB400PE | Engine model |
| Engine type | Air-cooled, V2-cylinder OHV, gasoline | Air-cooled, V2-cylinder OHV, gasoline | Air-cooled, V2-cylinder OHV, gasoline | Air-cooled, OHV, gasoline | Engine type |
| Maximum output *1 | 16.4 kW / 22 PS / 21.7 HP | 13.4 kW / 18 PS / 17.8 HP | 16.4 kW / 22 PS / 21.7 HP | 9.5 kW / 13 PS / 12.8 HP | Maximum output *1 |
| Start up device | Starter motor | Starter motor | Starter motor | Starter motor and Recoil | Start up device |
| Displacement | 726 cc | 603 cc | 726 cc | 400 cc | Displacement |
| Capacity of fuel tank | 14 L / 3.7 U.S.gal | 16 L / 4.2 U.S.gal | 16 L / 4.2 U.S.gal | 6 L / 1.58 U.S.gal | Capacity of fuel tank |
| Mowing width | 970 mm / 38.2 in. | 970 mm / 38.2 in. | 970 mm / 38.2 in. | 800 mm / 31.5 in. | Mowing width |
| Mowing height | 0-80 mm / 0-3.15 in. | 30-90 mm / 1.18-3.54 in. | 50-110 mm / 1.97-4.33 in. | 0-150 mm / 0-5.91 in. | Mowing height |
| Maximum work capacity | 8000 m ² / 2.0A | 7000 m ² / 1.7 A | 8000 m ² / 2.0 A | 3300 m ² / 0.82 A | Maximum work capacity |
| L x W x H | 1930 x 1100 x 910 mm 76.0 x 43.3 x 35.8 in. | 1890 x 1060 x 890 mm 74.4 x 41.7 x 35.0 in. | 2045 x 1055 x 995 mm 80.5 x 41.5 x 39.2 in. | 2340 x 970 x 1010 mm 72.1 x 38.2 x 39.8 in. | L x W x H |
| Total weight | 308 kg / 679.2 lbs. | 302 kg / 665.9 lbs. | 395 kg / 871.0 lbs. | 350 kg / 771.8 lbs. | Total weight |

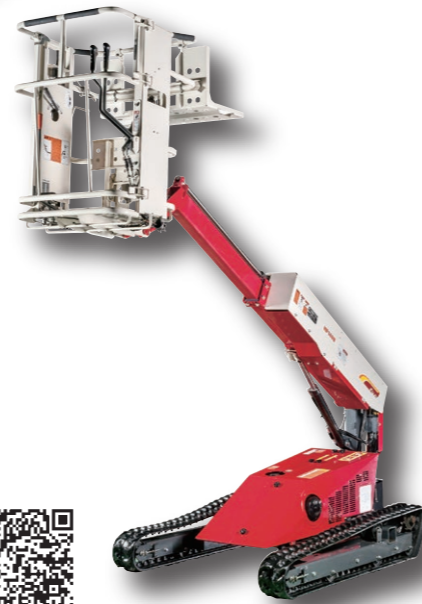
*1 The maximum output is gross output level in a typical engine substance.
 • The specifications and models may change for improvement without notification.

Boom Lift

*Scan QR Code, and check details!

HC

HC350M1W



HA

HA250M2W



HF

HF350M



Specifications

| MODEL | HA250M2W | HC350M1W | HF350M |
|--------------------------|---|--|---|
| Engine model | GB181LE-268 | GB181LE-268 | GB181LE-268 |
| Engine type | Air-cooled, 1 cylinder OHV, gasoline | Air-cooled, 1 cylinder OHV, gasoline | Air-cooled, 1 cylinder OHV, gasoline |
| Maximum output *1 | 4.6 kW / 6.3 PS / 6.2 HP | 4.6 kW / 6.3 PS / 6.2 HP | 4.6 kW / 6.3 PS / 6.2 HP |
| Start up device | Starter motor and Recoil | Starter motor and Recoil | Starter motor and Recoil |
| Capacity of fuel tank | 3.6 L / 1.0 U.S. gal | 3.6 L / 1.0 U.S. gal | 3.6 L / 1.0 U.S. gal |
| Maximum loading capacity | 100 kg / 220.5 lbs | 100 kg / 220.5 lbs | 100 kg / 220.5 lbs |
| Platform height | 260-2500 mm / 10.2-98.4 in. | 260-3500 mm / 10.2-137.8 in. | 185-3480 mm / 7.3-137.0 in. |
| Type | Hydraulic boom | Hydraulic boom | Hydraulic boom |
| Moving range *2 | 2600 mm / 102.4 in. | 2610 mm / 102.8 in. | 2980 mm / 117.3 in. |
| Turning angle of boom *3 | 37 degrees to each of right and left | 27 degrees to each of right and left | 27 degrees to each of right and left |
| L x W x H | 2440 x 1320 x 1160 mm 96.1 x 52.0 x 45.7 in. | 3180 x 1300 x 1295 mm 125.2 x 51.2 x 51.0 in. | 2475 x 1300 x 1310 mm 97.4 x 51.2 x 51.6 in. |
| Total weight | 375 kg / 826.9 lbs. | 534 kg / 1177.5 lbs. | 592 kg / 1305.4 lbs. |

*1 The maximum output is gross output level in a typical engine substance.
 *2 The distance is of the center of the work platform when the boom is horizontal.
 *3 The maximum angle of inclination for use is 5 degrees.
 • The specifications and models may change for improvement without notification.

Brush cutter

Corta

MH

MH502M1



Specifications

| MODEL | MH502M1 |
|-----------------------|---|
| Engine model | TLE43FD-360 |
| Engine type | Air-cooled, 2 cycle gasoline |
| Maximum output *1 | 1.27 kW / 1.73 PS / 1.70 HP |
| Start up device | Recoil |
| Displacement | 42.7 cc |
| Capacity of fuel tank | 0.9 L / 0.24 U.S.gal |
| Mowing width | 520 mm / 20.5 in. |
| Mowing height | 20-40 mm / 0.79-1.57 in. |
| Maximum work capacity | 830 m ² / 0.21 A |
| L x W x H | 1170 x 550 x 855 mm 46.1 x 21.7 x 33.7 in. |
| Total weight | 33 kg / 72.8 lbs. |